

注記 NOTES:

1. 使用材料 MATERIAL
 ハウジング : PPS, UL94V-0
 ターミナル : リン青銅 (t=0.25)
 メッキ : 銅下地半田メッキ
 金具 : リン青銅 (t=0.25)
 メッキ : 銅下地半田メッキ
- HOUSING : PPS, UL94V-0
 TERMINAL : PHOSPHOR BRONZE
 PLATING : Sn-Pb OVER Cu
 FITTING NAIL : PHOSPHOR BRONZE
 PLATING : Sn-Pb OVER Cu
- 基準面 [E] からのソルダテールとフィッティングネイルの半田付け面のスレ量は、
 上方向に0.1MAX. 下方向0.15MAX. とする。
 MISALIGNMENT OF SOLDER TAIL AND FITTING NAIL FROM [E]
 : UPPER DIRECTION 0.1 MAX. , LOWER DIRECTION 0.15 MAX.
- 偶数極に適用。
 APPLY FOR EVEN CKT.

33.8	31.05	29	52793-3010	30
32.8	30.05	28	-2910	29
31.8	29.05	27	-2810	28
30.8	28.05	26	-2710	27
29.8	27.05	25	-2610	26
28.8	26.05	24	-2510	25
27.8	25.05	23	-2410	24
26.8	24.05	22	-2310	23
25.8	23.05	21	-2210	22
24.8	22.05	20	-2110	21
23.8	21.05	19	-2010	20
22.8	20.05	18	-1910	19
21.8	19.05	17	-1810	18
20.8	18.05	16	-1710	17
19.8	17.05	15	-1610	16
18.8	16.05	14	-1510	15
17.8	15.05	13	-1410	14
16.8	14.05	12	-1310	13
15.8	13.05	11	-1210	12
14.8	12.05	10	-1110	11
13.8	11.05	9	-1010	10
12.8	10.05	8	-0910	9
11.8	9.05	7	-0810	8
10.8	8.05	6	-0710	7
9.8	7.05	5	-0610	6
8.8	6.05	4	-0510	5
7.8	5.05	3	-0410	4
6.8	4.05	2	52793-0310	3
C	B	A	ENG. NO	極数 CIRCUIT

角度 ANGLE	±3°				
30以上 OVER	+0.3	B	変更 (JC80048)	1/15	9/17/15
10以上 30未満 UNDER	+0.25	A	変更 (J40668)	8/20	9/4/15
10未満 UNDER	+0.2	O	新規作成 (J40449)	6/9	9/4/15
一般公差 GENERAL TOLERANCES	記号 LTR	変更内容 REVISION RECORD	DR. CHK.	日付 DATE	

材料 MATERIAL	注記参照 SEE NOTES
仕上げ FINISH	—
適用電線範囲 WIRE RANGE	—
被覆外径 INS. RANGE	—
DRAWN BY 94/6/9 S. AIHARA	CHK'D BY '97/1/15 M. FUKUSHIMA
APP'D BY '97/1/15 M. FUKUSHIMA	尺度 SCALE 10 : 1

molex MOLEX-JAPAN CO.,LTD.
 日本モレックス株式会社

REVISE ONLY ON CAD SYSTEM

TITLE 名称
 I.O FFC CONN.
 NON Z.I.F. SMT. R/A
 (UPPER CONTACT)

DWG. NO. (SHEET 1 OF 2) REV
 SD-52793-***10

DWG. NO. SD-52793-**-10

E

D

C

B

A

F

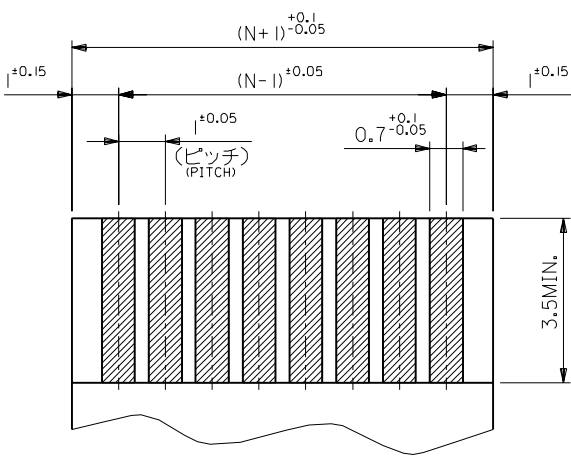
E

D

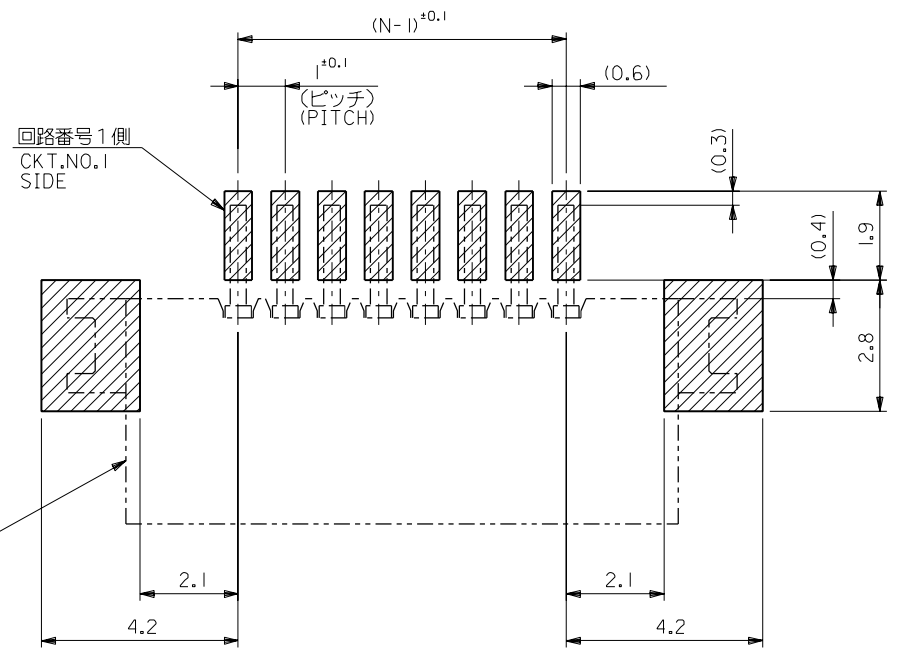
C

B

A



(仕上がり厚さ) 0.3 ±0.03
THICKNESS
適合 FPC 推奨寸法
APPLICABLE FPC
RECOMMENDED DIMENSION.



参考基板レイアウト (マウント面)
RECOMMENDED P.C. BOARD
PATTERN DIMENSION. (REF.)
(MOUNTING AREA)

コネクタ位置
CONNECTOR
POSITION

回路番号 1 側
CKT. NO. 1
SIDE

DIMENSIONS IN METRIC DO NOT SCALE DRAWING

角度 ANGLE		±3°				材料 MATERIAL	—//—	MOLEX-JAPAN CO.,LTD. 日本モレックス株式会社
30 以上 OVER	30 未満 UNDER	+0.3	B 変更 REVISOR	JC80048	19/1/15	仕上げ FINISH	—//—	
10 以上 OVER	30 未満 UNDER	+0.25	A 変更 REVISOR	(J40668)	94/ 8/20	適用電線範囲 WIRE RANGE	—//—	TITLE 名称
10 未満 UNDER		+0.2	O 新規作成 PROPOSER	(J40449)	94/ 6/ 9	被覆外径 INS. RANGE	—//—	1.0 FFC CONN. NON Z.I.F. SMT. R/A (UPPER CONTACT)
一般公差 GENERAL TOLERANCES			記号 LTR	変更内容 REVISION RECORD	DR. CHR.	日付 DATE	APP'D BY: '91/7/15 S. AIHARA M. FUKUSHIMA	CHK'D BY: '91/7/15 M. FUKUSHIMA
							尺 度 SCALE	10 : 1

THIS DRAWING CONTAINS INFORMATION THAT IS PROPRIETARY TO MOLEX(JAPAN) AND SHOULD NOT BE USED WITHOUT WRITTEN PERMISSION
本図面は日本モレックス(株)の所有する情報を含むもので 当社の許可なく複製を禁止する。
EN-01C(032)MXJ-32

8

7

6

5

4

3

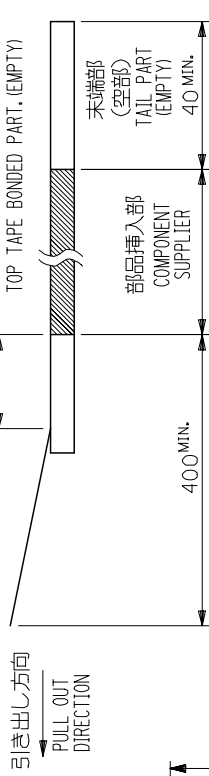
2

1

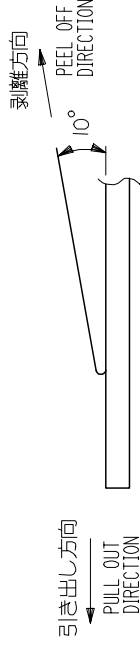
A52793.S04

NOTES

1. 製品詳細寸法については図面 SD-52793-**-**10 を参照下さい。
RE DETAILED DIMENSION, SEE SD-52793-**-**10
2. 梱包数量: 1,000個/リール
NUMBER OF CONNECTORS: 1000PCS/REEL
3. リードテープ長さ LEAD TAPE LENGTH
20PCS. MIN. トップテープ接着部 (空エンボス)
TOP TAPE BONDED PART. (EMPTY)

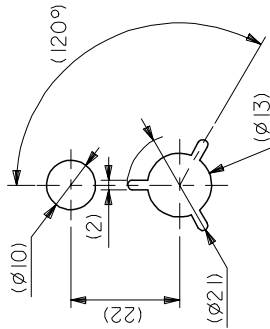
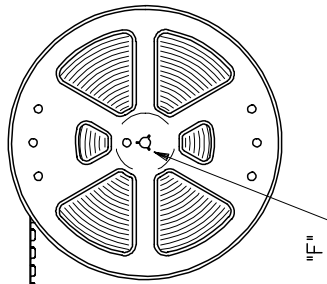
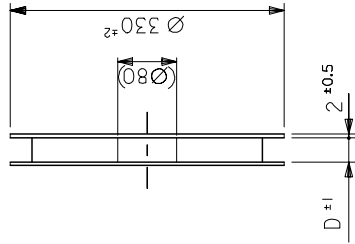


4. トップテープの剥離強度: 0. IN ~ 0.7N(10.2gf ~ 71.4gf)
(剥離方向は下図参照)
尚、本規格値は出荷時に適用。(但し、輸送時に剥離が発生しないこと。)
PEELING OFF FORCE OF TOP TAPE: 0. IN ~ 0.7N(10.2gf ~ 71.4gf)
(PEELING DIRECTION AS SHOWN IN FOLLOWING FIG.)
THIS REQUIREMENT SHOULD BE APPLIED AT SHIPMENT.
PEEL OFF SHOULD NOT BE ALLOWED, DURING TRANSPORTATION.



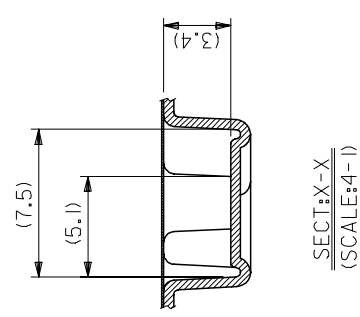
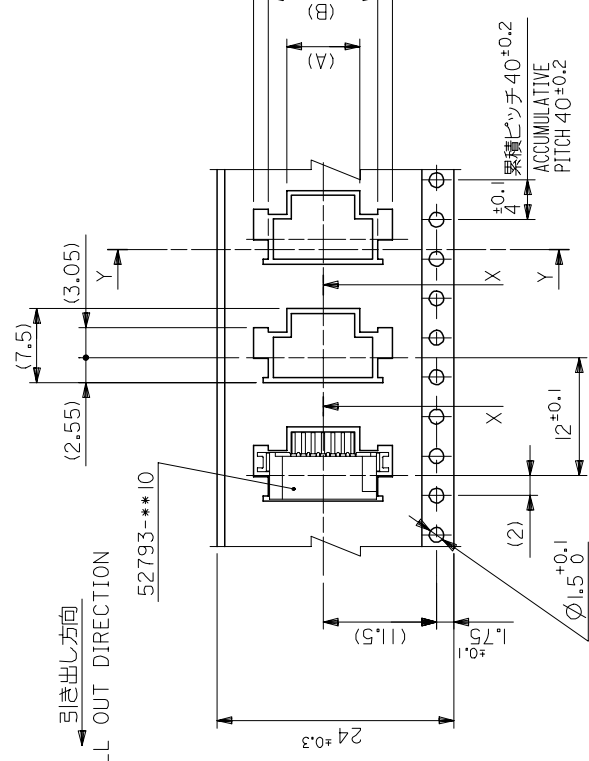
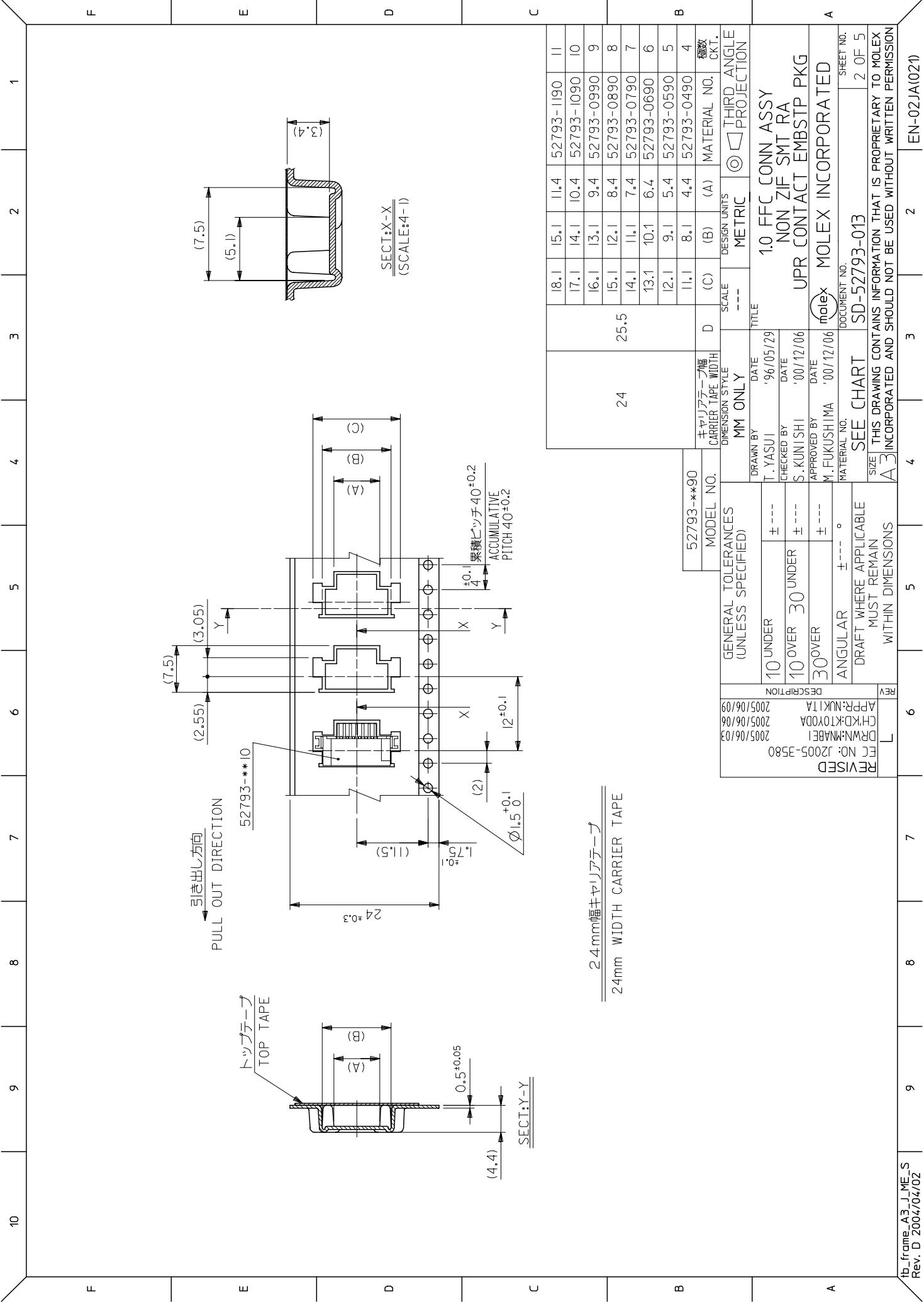
5. 材料 (MATERIAL)
キャリアテープ (CARRIER TAPE): ポリプロピレン (POLYPROPYLENE)
キリアテープ (TOPTAPE): PET, PE, PEF
トップテープ (REEL): ポリスチレン (PS) <リサイクル材を含む>
リール (REEL): POLYSTYRENE (PS) <RECYCLE MATERIAL CONTAINED>

引き出し方向
PULL OUT
DIRECTION



DETAIL "F"

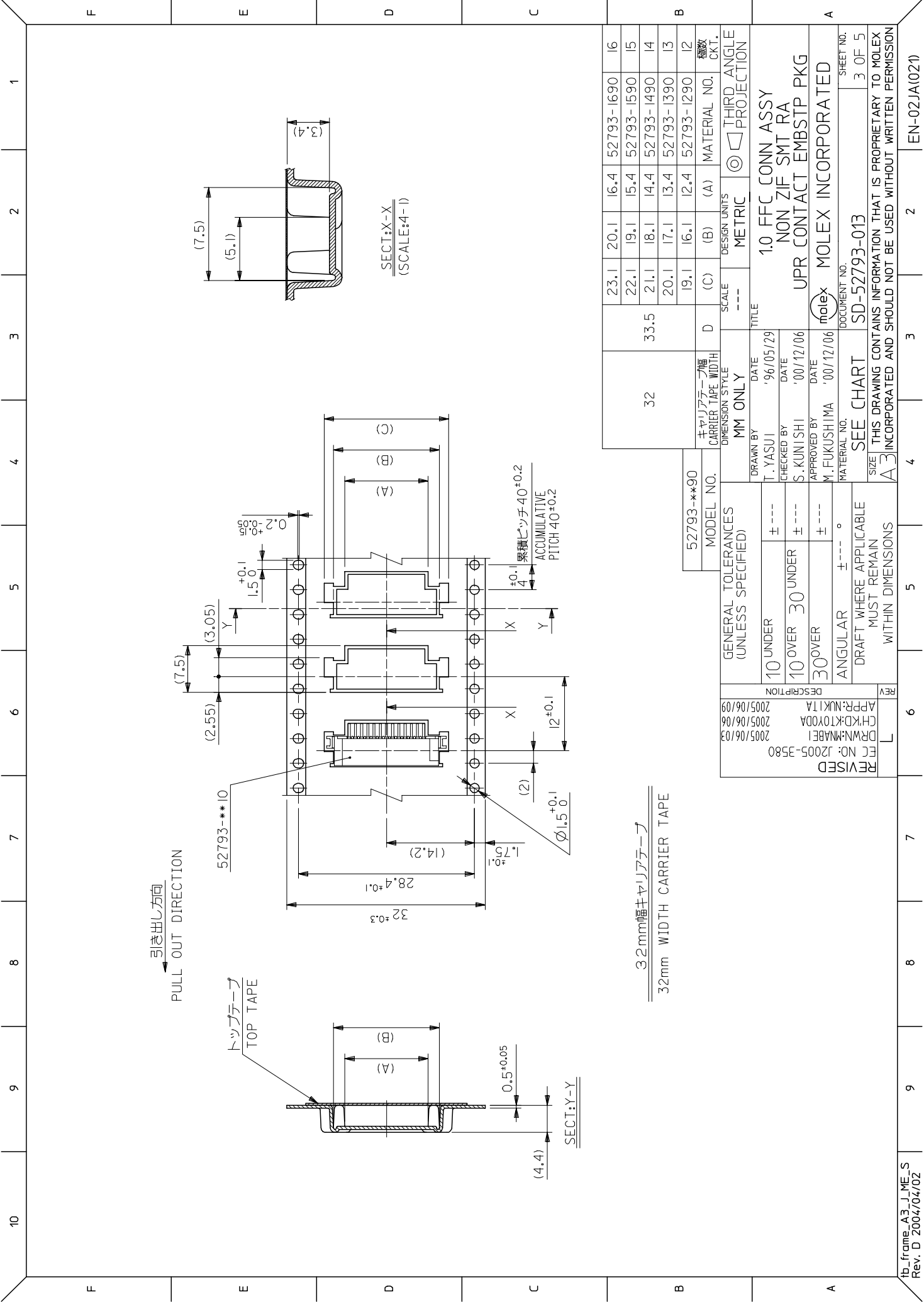
GENERAL TOLERANCES (UNLESS SPECIFIED)		DIMENSION STYLE MM ONLY	SCALE ---	DESIGN UNITS METRIC	MODEL NO. 52793-**-90
10 UNDER	± 0.2	DRAWN BY T. YASUI	DATE '96/05/29	THIRD ANGLE PROJECTION	
10 OVER	± 0.25	CHECKED BY S. KUNISHI	DATE '00/12/06		1.0 FFC CONN ASSY NON ZIF SMT RA
30 OVER	± 0.3	APPROVED BY M. FUKUSHIMA	DATE '00/12/06		UPR CONTACT EMBSTP PKG
ANGULAR	± 3 °	MATERIAL NO.	DOCUMENT NO.		MOLEX INCORPORATED
DRAFT WHERE APPLICABLE MUST REMAIN WITHIN DIMENSIONS		SEE CHART			SHEET NO. 1 OF 5
REVISED		REVISED			
EC NO: J2005-3580		DRWN: MNABEI			
2005/06/03		CHKD: TOYODA			
2005/06/06		APP: NUKITA			
2005/06/09		DESCRIPTION			



24mm 幅キャリアテープ
24mm WIDTH CARRIER TAPE

52793-**-90	キャリアテープ幅 CARRIER TAPE WIDTH	MM ONLY	SCALE	DESIGN UNITS	THIRD ANGLE PROJECTION
MODEL NO.	D	(C)	(B)	(A)	MATERIAL NO.
18.1	15.1	11.4	52793-1190	11	
17.1	14.1	10.4	52793-1090	10	
16.1	13.1	9.4	52793-0990	9	
15.1	12.1	8.4	52793-0890	8	
14.1	11.1	7.4	52793-0790	7	
13.1	10.1	6.4	52793-0690	6	
12.1	9.1	5.4	52793-0590	5	
11.1	8.1	4.4	52793-0490	4	

GENERAL TOLERANCES (UNLESS SPECIFIED)		DRAWN BY T. YASUI		DATE '96/05/29	
10 UNDER	± ---	CHECKED BY S. KUNISHI		DATE '00/12/06	
10 OVER	30 UNDER	APPROVED BY M. FUKUSHIMA		DATE '00/12/06	
30 OVER	± ---	MATERIAL NO.		DOCUMENT NO.	
ANGULAR	± --- °	SEE CHART		SD-52793-013	
DRAFT WHERE APPLICABLE MUST REMAIN WITHIN DIMENSIONS		TITLE		1.0 FFC CONN ASSY NON ZIF SMT RA UPR CONTACT EMBSTP PKG	
REVISED		REV		SHEET NO.	
EC NO: J2005-3580	DRWN:MMNABEI	2005/06/03	2005/06/03	2 OF 5	
CHKD:KTOYODA	2005/06/06	APP:NUKITA		THIS DRAWING CONTAINS INFORMATION THAT IS PROPRIETARY TO MOLEX INCORPORATED AND SHOULD NOT BE USED WITHOUT WRITTEN PERMISSION	
2005/06/09	2005/06/09	DESCRIPTION		A3 INCORPORATED AND SHOULD NOT BE USED WITHOUT WRITTEN PERMISSION	



32	33.5	23.1	20.1	16.4	52793-1690	16
		22.1	19.1	15.4	52793-1590	15
		2.1	18.1	14.4	52793-1490	14
		20.1	17.1	13.4	52793-1390	13
		19.1	16.1	12.4	52793-1290	12

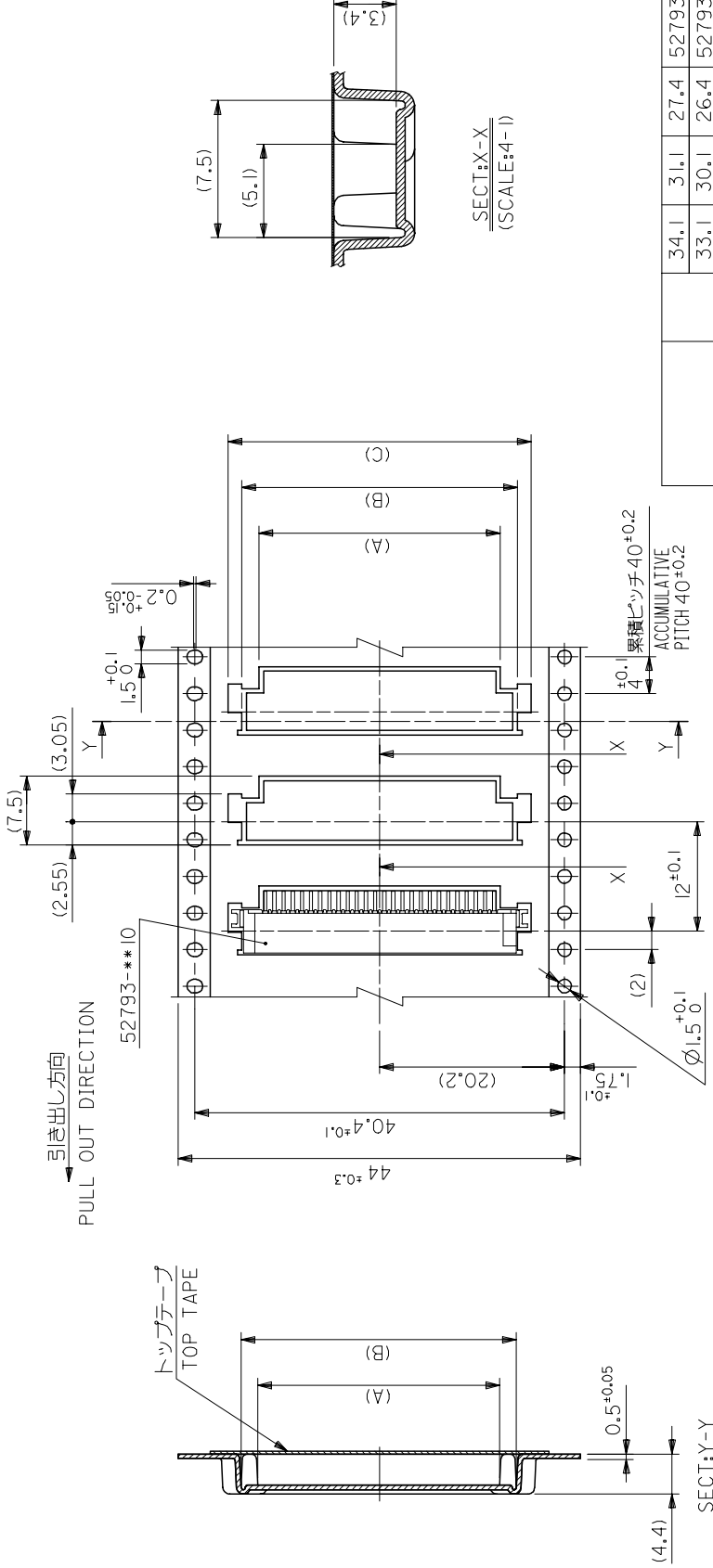
キャリアテープ幅 CARRIER TAPE WIDTH	MM ONLY	SCALE	DESIGN UNITS	THIRD ANGLE PROJECTION		
MODEL NO.	52793-**-90	D	(C)	(B)	(A)	MATERIAL NO.

GENERAL TOLERANCES (UNLESS SPECIFIED)	10 UNDER ± ---	10 OVER 30 UNDER ± ---	30 OVER ± ---	ANGULAR ± --- °
DRAFT WHERE APPLICABLE MUST REMAIN WITHIN DIMENSIONS				

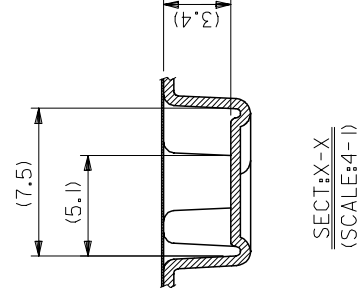
DRAWN BY	T. YASUI	DATE	'96/05/29
CHECKED BY	S. KUNISHI	DATE	'00/12/06
APPROVED BY	M. FUKUSHIMA	DATE	'00/12/06
MATERIAL NO.	DOCUMENT NO.		
SEE CHART	SD-52793-013		
TITLE			
1.0 FFC CONN ASSY NON ZIF SMT RA UPR CONTACT EMBSTP PKG			
MOLEX INCORPORATED			
SHEET NO. 3 OF 5			

10 9 8 7 6 5 4 3 2 1

F E D C B A

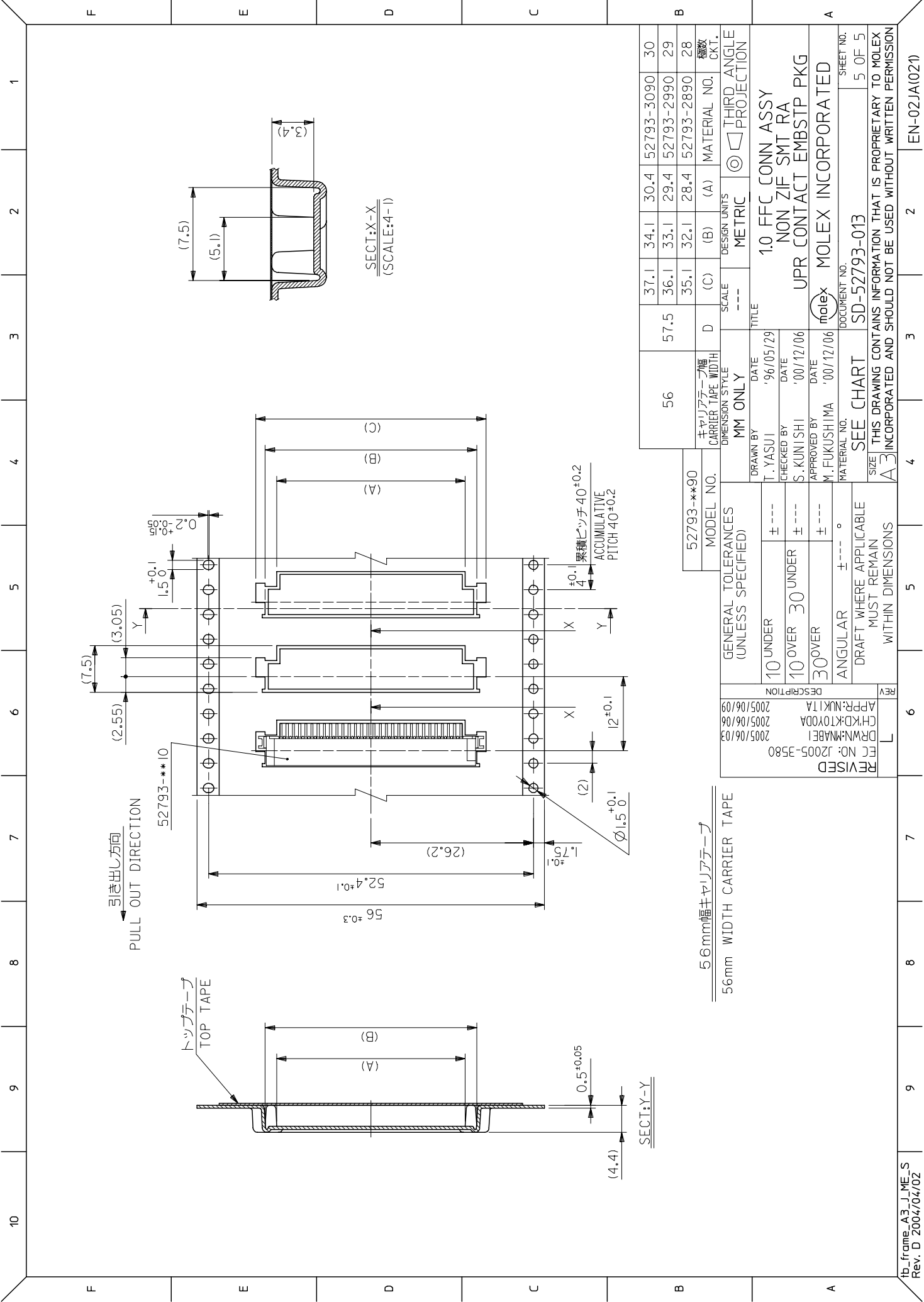


4.4mm幅キャリアテープ
44mm WIDTH CARRIER TAPE



44	45.5	34.1	31.1	27.4	52793-2790	27
		33.1	30.1	26.4	52793-2690	26
		32.1	29.1	25.4	52793-2590	25
		31.1	28.1	24.4	52793-2490	24
		30.1	27.1	23.4	52793-2390	23
		29.1	26.1	22.4	52793-2290	22
		27.1	24.1	20.4	52793-2090	20
		26.1	23.1	19.4	52793-1990	19
		25.1	22.1	18.4	52793-1890	18
		24.1	21.1	17.4	52793-1790	17

52793-***90	MODEL NO.	キャリアテープ幅 CARRIER TAPE WIDTH	D	(C)	(B)	(A)	MATERIAL NO.
GENERAL TOLERANCES (UNLESS SPECIFIED)							
10 UNDER	± ---	MM ONLY	SCALE	---	DESIGN UNITS	METRIC	THIRD ANGLE PROJECTION
10 OVER	30 UNDER	DRAWN BY	T. YASUJI	DATE	'96/05/29	TITLE	
30 OVER	± ---	CHECKED BY	S. KUNISHI	DATE	'00/12/06	1.0 FFC CONN ASSY NON ZIF SMT RA	
ANGULAR	± --- °	APPROVED BY	M. FUKUSHIMA	DATE	'00/12/06	UPR CONTACT EMBSTP PKG	
DRAFT WHERE APPLICABLE MUST REMAIN WITHIN DIMENSIONS							
REVISED EC NO: J2005-3580							
REVISED DRWN: MNABEI 2005/06/03							
REVISED CHKD: KTOYODA 2005/06/06							
REVISED APPR: NUKI TA 2005/06/09							
DOCUMENT NO. MOLEX INCORPORATED							
SHEET NO. SD-52793-013							
4 OF 5							



F

F

E

E

D

D

C

C

B

B

A

A

引き出し方向
PULL OUT DIRECTION

トップテープ
TOP TAPE

SECT: X-X
(SCALE: 4-1)

SECT: Y-Y

56mm幅キャリアテープ
56mm WIDTH CARRIER TAPE

MODEL NO.	52793-**-90
キャリアテープ幅 CARRIER TAPE WIDTH	56

GENERAL TOLERANCES (UNLESS SPECIFIED)	SCALE	DESIGN UNITS	THIRD ANGLE PROJECTION
10 UNDER ± ---	---	METRIC	☉
10 OVER 30 UNDER ± ---	TITLE		
30 OVER ± ---	DATE		
ANGULAR ± --- °	'96/05/29		
DRAFT WHERE APPLICABLE MUST REMAIN WITHIN DIMENSIONS	CHECKED BY		
	S. KUNISHI		
	DATE		
	'00/12/06		
	APPROVED BY		
	M. FUKUSHIMA		
	DATE		
	'00/12/06		
	MATERIAL NO.		
	SEE CHART		
	SD-52793-013		
	DOCUMENT NO.		
	MOLEX INCORPORATED		
	1.0 FFC CONN ASSY		
	NON ZIF SMT RA		
	UPR CONTACT EMBSTP PKG		
	MOLEX		
	SHEET NO.		
	5 OF 5		

REV	DESCRIPTION
1	REVISED EC NO: J2005-3580 DRWN: MNABEI 2005/06/03
2	CHKD: KTOYODA 2005/06/06
3	APP: NUKITA 2005/06/09

56	37.1	34.1	30.4	52793-3090	30
	57.5	33.1	29.4	52793-2990	29
		35.1	28.4	52793-2890	28